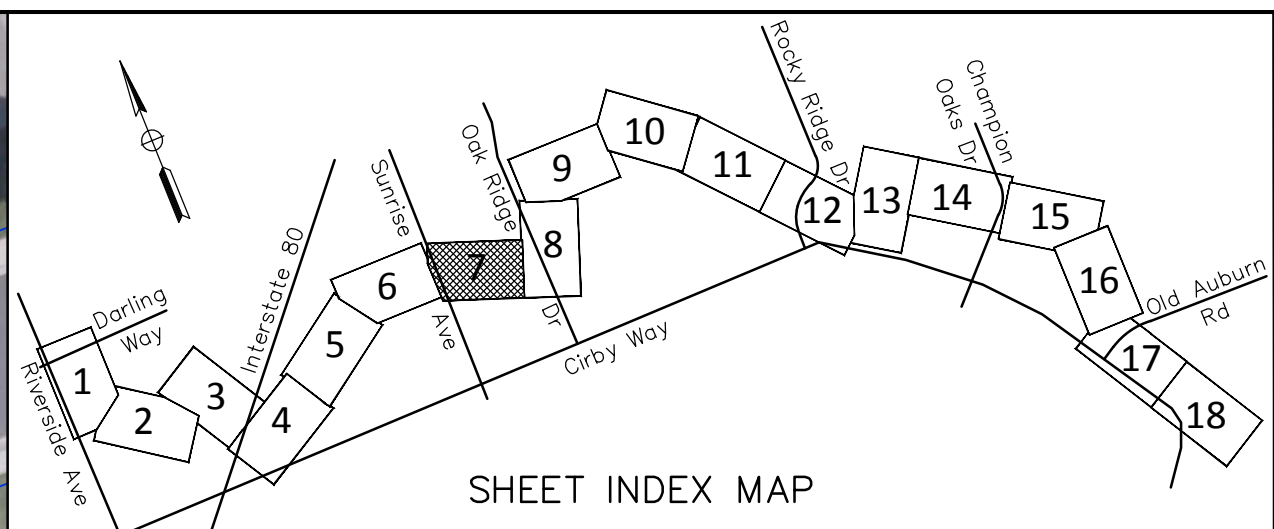
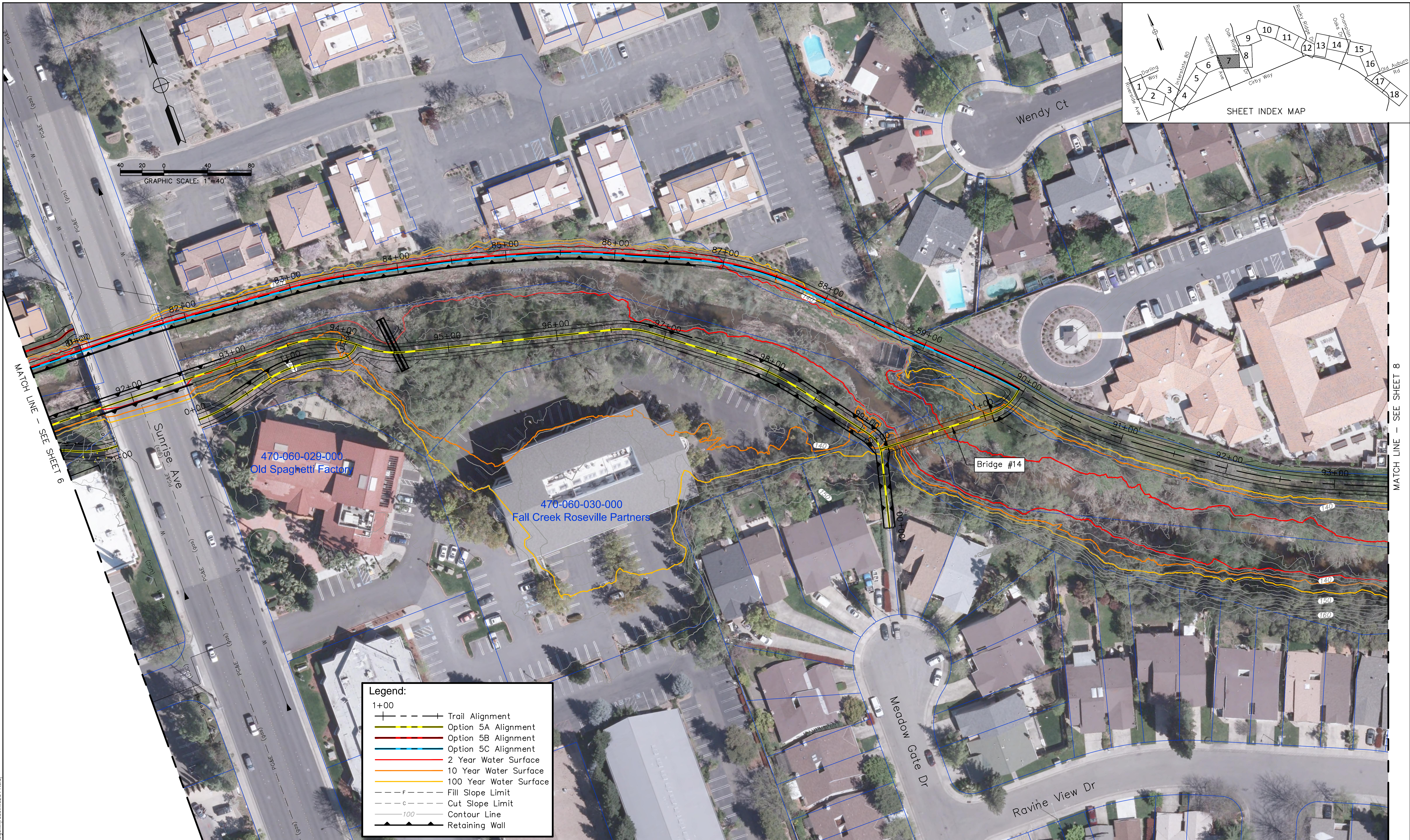


Xrefs: L:\DAR_1\LDAR_2\LDAR_3\LDAR_4\LDAR_5\c_border\Food_Elevations_LT_Type\Alternative_Base\X-TPG-DCP-12092161-GRID-88\X-UTILX-TPG-DCP-MEADOWAKS-88-GRID\Roseville-88-GRID\Roseville_image_2011\X-ESMNTS-DRYCREEK\Alternative_1\CX-TPG-DCP-SUNRISE-TRAIL\old-cuburn-subdivision-images: cropped COR_black logo.tiff\roseville2011.sxd



Legend:

- 1+00 ——— Trail Alignment
- Option 5A Alignment
- Option 5B Alignment
- Option 5C Alignment
- 2 Year Water Surface
- 10 Year Water Surface
- 100 Year Water Surface
- F ----- Fill Slope Limit
- c ----- Cut Slope Limit
- 100 ----- Contour Line
- ▲ Retaining Wall

REVISIONS			
NO.	DESCRIPTION	DATE	BY

BENCH MARK	ELEV.

FIELD BOOK

CITY OF ROSEVILLE CALIFORNIA

PSOMAS
 1075 Creekside Ridge Drive, #200, Roseville, CA 95678 (916) 788-8122
 DESIGNED BY: B. WRIGHT DATE MAY 2013
 CHECKED BY: T. HAYES DATE MAY 2013
 DRAWN BY: C. CUSTER DATE MAY 2013

DRY CREEK GREENWAY MULTI-USE TRAIL PROJECT
PRELIMINARY LAYOUT DRAWING
SHEET 7 - SUNRISE (EAST)